

CERTIFICATE OF LOCATION OF GOVERNMENT CORNER

NORTH QUARTER Corner of Section 12, Township 107, Range 40, 5TH P.M.

STATE OF MINNESOTA, County of MURRAY

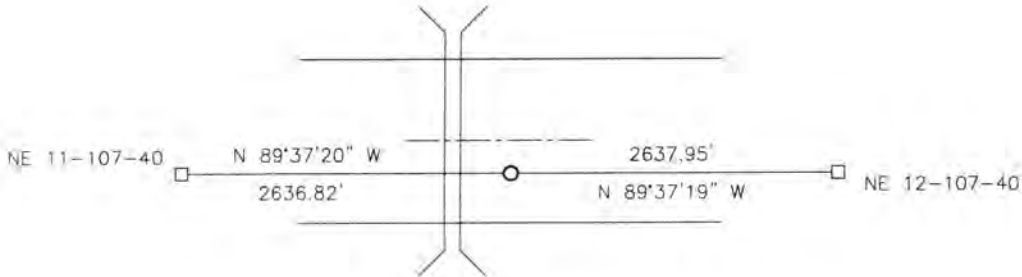
At the corner location shown on the sketch:

On 04-25-2017 found a A FIELD STONE OVER A LARGER FIELD STONE.
DATE

left monument as found, lowered monument, removed monument (explain)

On 04-25-2017 placed a 5/8" IRON WITH SEAL #50343.
DATE

SKETCH OF REFERENCE TIES



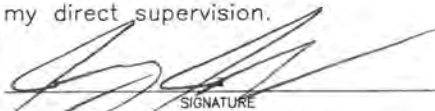
Minnesota State Plane Coordinate
System Murray County Datum
NAD83 (1996)

N: 189870.224
E: 545729.519

The corner is 2.5± south of the centerline of the road.
The corner is 5± east of culvert.

Statement of evidence relative to this corner location is on back of page.

I hereby certify that this document and the data contained herein was prepared by me or under my direct supervision.

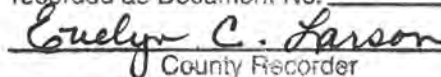

SIGNATURE 2/19/18
DATE

Registration No. 50343

Land Surveyor, Professional Engineer
 County Surveyor, County Engineer

STATE OF MINNESOTA, }
COUNTY OF MURRAY, } ss.

I hereby certify that the within Instrument was filed in this office for record on the 26TH day of MARCH A.D. 20 18 at 9:00 o'clock A. M. and was duly recorded as Document No. _____


County Recorder

Statement of Evidence

In 1861, L. Brockmann did the original subdivision of the township.

On April 25, 2017, Bueltel-Moseng Land Surveying dug with a backhoe midway and on line between the section corners. We found a field stone over a larger field stone. We removed the top stone and set a 5/8" iron with seal #50343 over the larger field stone. It is 2.5'± south of the center of the road.